

MATERIALS
28 1/2" ~ BAR 1/2" x 1/4"
112 1/2" ~ 6" 570 WT. STEEL PIPE
280 1/2" ~ 4" x 3/32" (OR WHATS AVAILABLE)
8 ~ BAR 6" x 5/8" 12-9
104 ~ 12" x 6" MACH. BOLTS ONLY (NO NUTS)
20 1/2" ~ BAR 1/2" x 1/4" (ORDER 24" IN 12" LENGTHS)
ONE ~ 4" STRIP SEAL (5'-00") x 26'-0" 10-9
52 1/2" ~ TYPE A" STEEL EXTENSION FOR
ABOVE STRIP SEAL
ONE ~ PREPARED JOINT SEAL 1/4" x 5/8" 26'-0" (WJT-125)

EST. CONC.
368 x .33 x 24 = 108 cu ft
27 BONDING GROUT NOTES

The deck surface must be thoroughly sandblasted and cleaned to remove all dust or loose materials immediately before bonding grout is placed.

Deck surface to be surface dry with no standing water in pockets or low areas when bonding grout is applied.

The bonding grout shall consist of equal parts by weight of Portland Cement and concrete sand with the plus #8 material removed and mixed with enough water to give a thick, creamy consistency.

Bonding grout to be evenly broomed onto the concrete surface ensuring that the entire surface, including face of curb to the finish grade of the wearing surface, is coated and that no excess grout collects in low spots or pockets. Grout shall be thoroughly broomed under and around reinforcing bars.

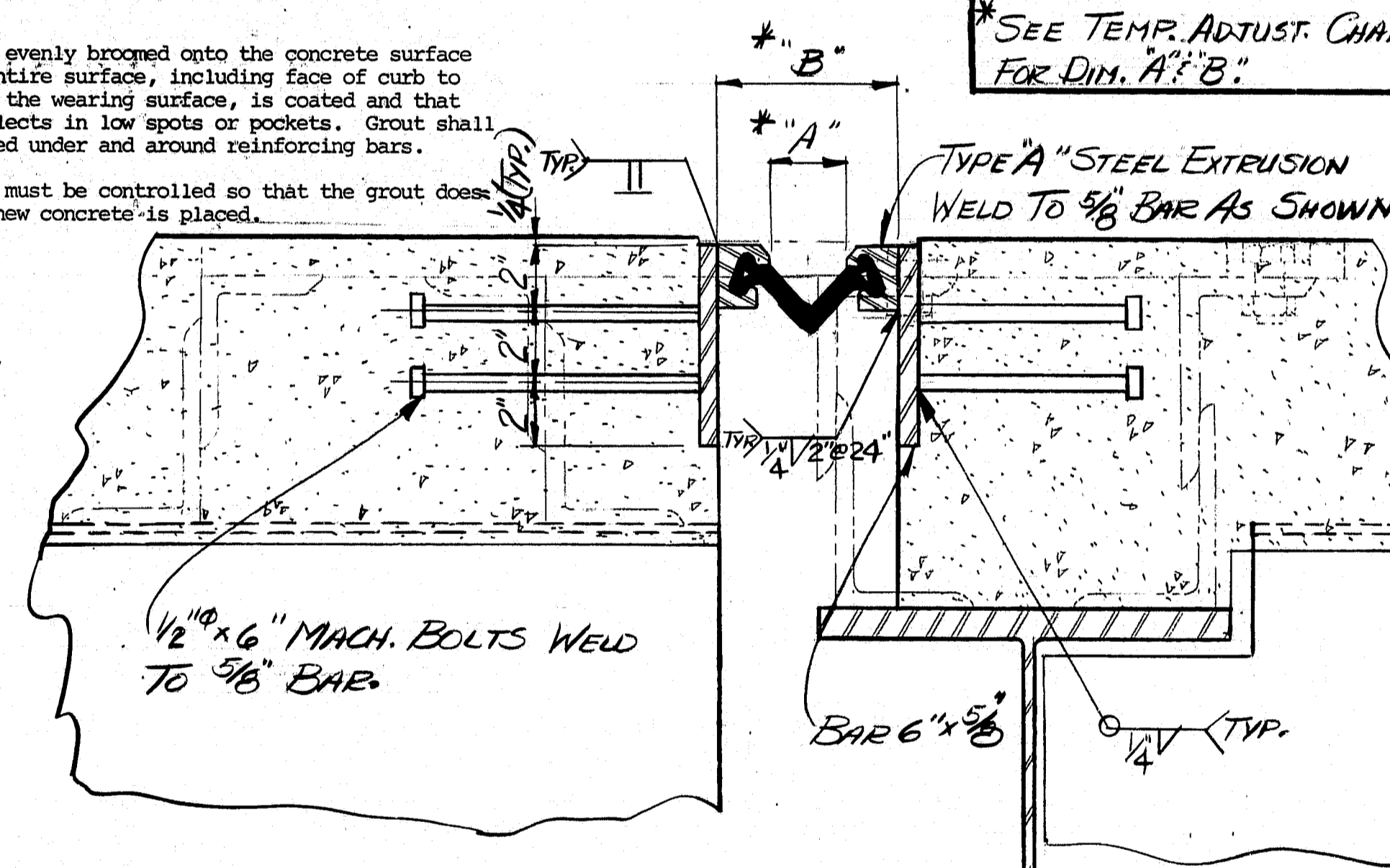
Rate of application must be controlled so that the grout does not dry before the new concrete is placed.

MOVE EXISTING

GENERAL NOTES

1. Remove existing wearing surface.
2. If main steel is exposed, concrete should be removed under the steel to a depth of 1" minimum.
3. Blast clean the slab before any placement of bonding grout or concrete. NOTE: SLAB IS TO BE SURFACE DRY BEFORE PLACEMENT OF BONDING GROUT.
4. Broom on a layer of bonding grout just prior to placing concrete. See note this sheet for bonding grout specifications.
5. Concrete to be cured using burlap and water or other approved methods.
6. Concrete to be Class "M" and aggregate to be crushed lead-ge.
7. Minimum cover to be 2" unless otherwise noted.
8. Chamfer all exposed edges 1" unless otherwise noted.

* SEE TEMP. ADJUST. CHA.
FOR DIM. A² B².

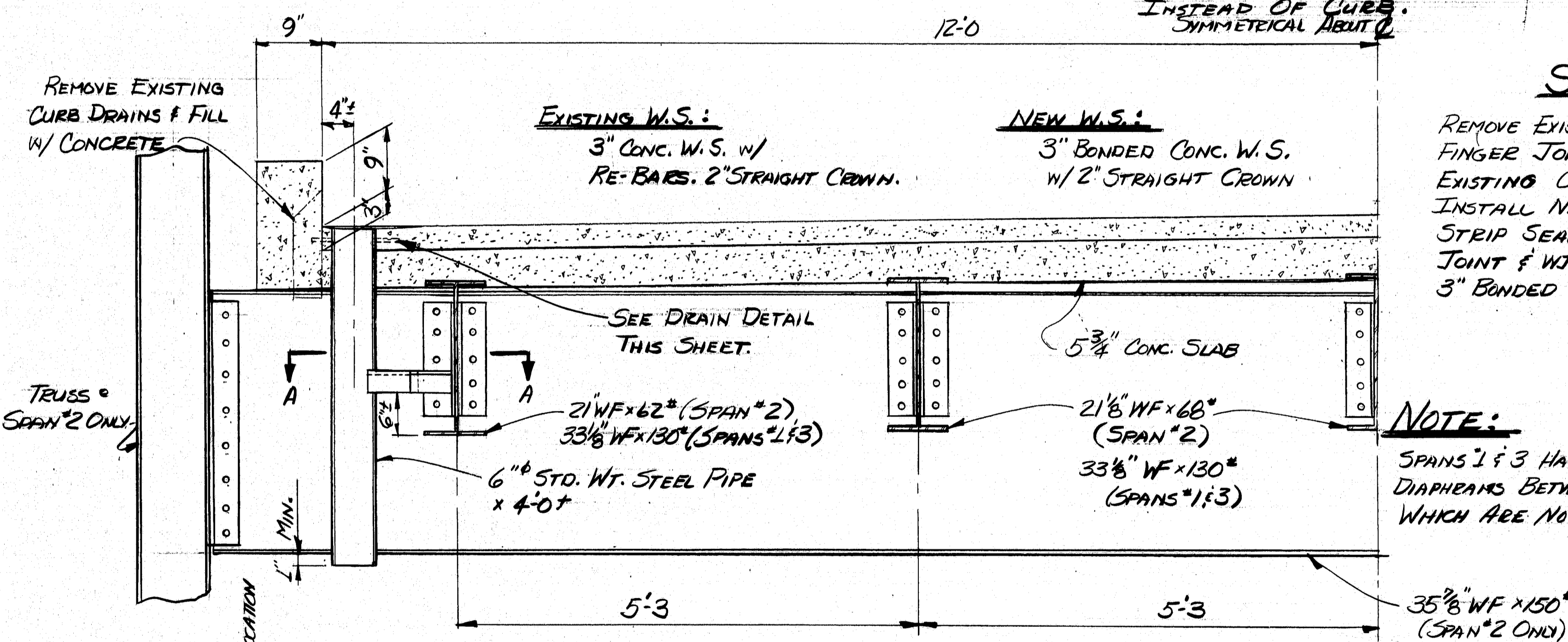


SCOPE of WORK

REMOVE EXISTING CONC. W.S. REMOVE EXISTING
FINGER JOINT & ANCHORAGE ASSEMBLY. REMOVE
EXISTING CURB DRAINS. FILL HOLES W/ CONC.
INSTALL NEW DECK DRAINS. INSTALL NEW 4"
STREIP SEAL @ PIER #1. INSTALL NEW ARMORED
JOINT & WT-125 SEAL @ PIER #2. PLACE NEW
3" BOUNDED CONC. W.S.

NOTE:

SPANS 1 & 3 HAVE 15" CHANNEL
DIAPHRAGMS BETWEEN 33 1/2" STRINGERS,
WHICH ARE NOT SHOWN.



HALF TRANSVERSE SECTION

SPAN #2 SHOWN
SPANS #1 & 3 SIMILAR EXCEPT AS NOTED

DEPRESS W.S. AROUND
DRAINS 1/2" AS SHOWN
BY ARROWS. E ← S.W.P.

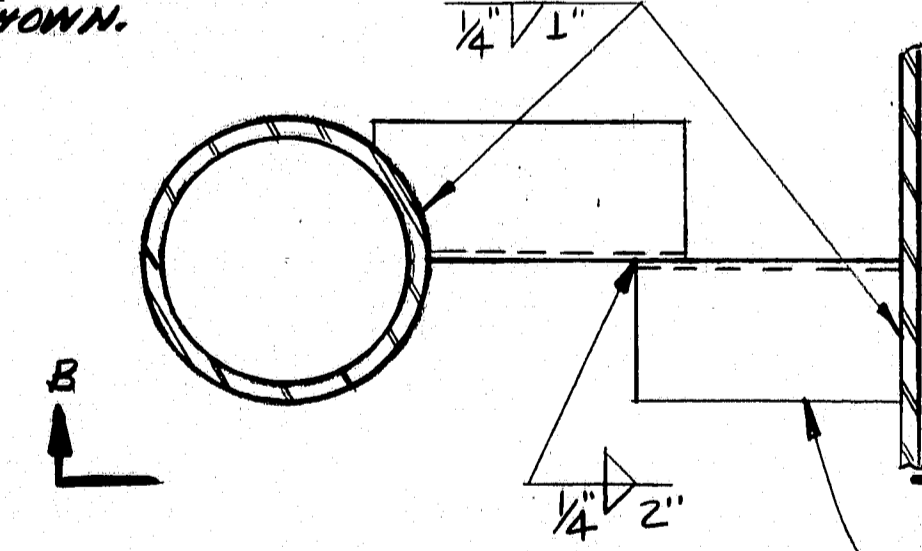
2~BARS 1 1/2" x 1/2" @ 2' O.C.
WELD AS SHOWN.

WELD AS SHOWN.

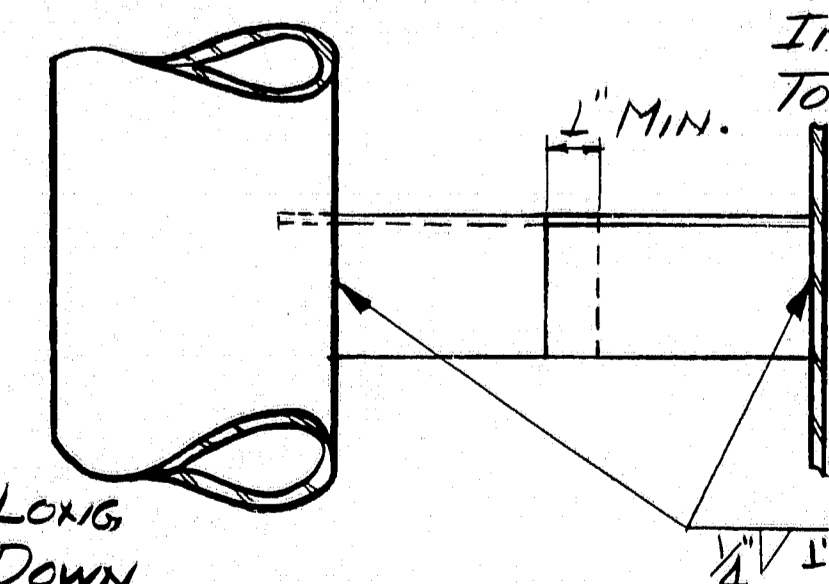
FACE OF CURB

WELD 4-#4 REBAR
AS SHOWN, APPROX
FROM TOP OF DRA

TYPICAL DRAIN SLOPE DETAIL



*3"x3"x5/16" OR
WHAT IS AVAILABLE
IN STOCK. SHAPE
TO FIT PIPE



VIEW B-B

FOR USE W/ 4" STRIP SEAL											
		TEMPERATURE ADJUSTMENT CHART									
DIM.	TEMP. (F°)	10°	20°	30°	40°	50°	60°	70°	80°	90°	
"A"	OPENING	2 1/2"	2 3/8"	2 1/2"	1 7/8"	1 1/2"	1 1/4"	1 1/8"	1 1/8"	1 1/8"	
DIM.	TEMP. (F°)	10°	20°	30°	40°	50°	60°	70°	80°	90°	
B"	OPENING	5 1/2"	5 3/4"	5 1/2"	4 3/4"	4 1/2"	4 1/4"	4 1/4"	4 1/4"	4 1/4"	3 1/2"

STATE OF MAINE
DEPARTMENT OF TRANSPORTATION

#3666

WEST BRANCH BRIDGE
OVER
W. BRANCH PENOBSCOT R.
IN THE TOWN OF
INDIAN PURCHASE ~T3

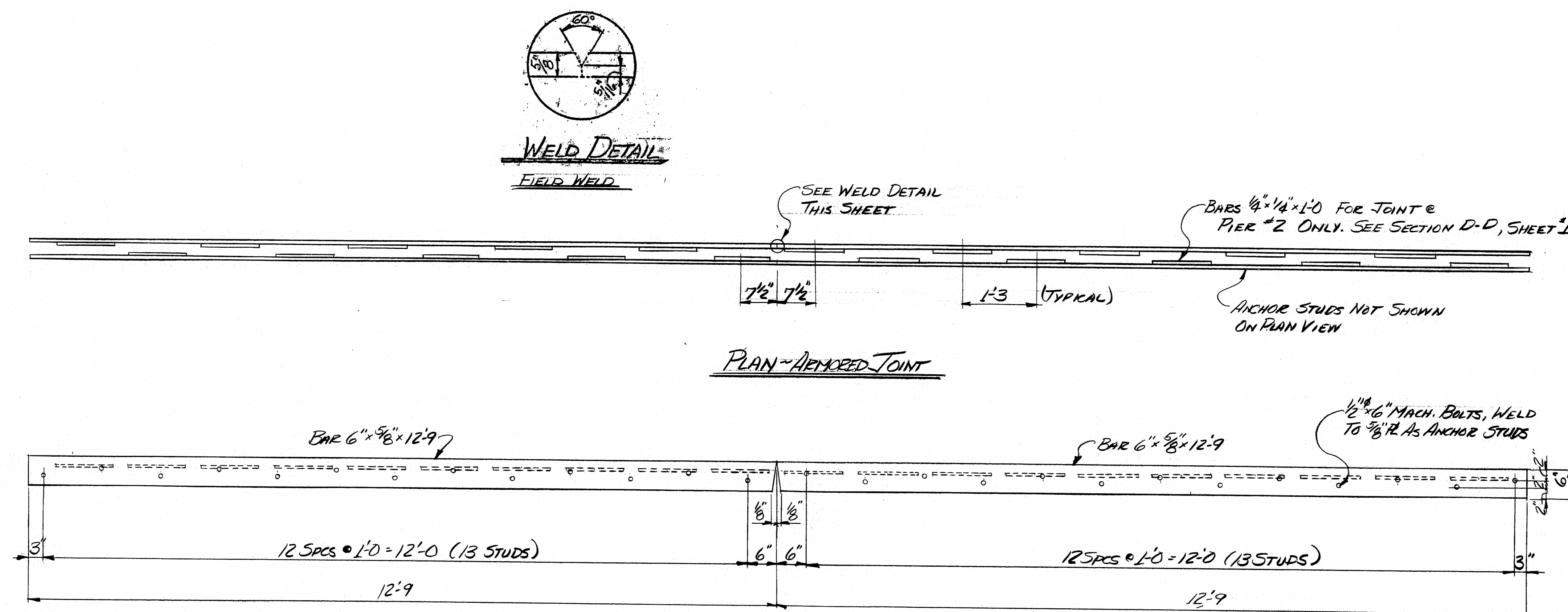
IN
PENOBSCOT CO.
BONDED CORD W.S., SEALS, DRAINS.

SHEET 2 OF 2 AUGUSTA, MAINE APRIL 23, 1955

PROJECT DESIGN ENGINEER	DATE
BY	4-28-85
DESIGN - DETAIL	
CHECKED	
REVISIONS	
FIELD CHANGES	
PLANS	

BRIDGE 96-402 25710

F.R.W.A. REV. NO.	STATE	PROJECT NUMBER	SHEET NO.	TOTAL SHEETS
1	MAINE			



96-402

STATE OF MAINE
DEPARTMENT OF TRANSPORTATION
#3666
WEST BRANCH BRIDGE
OVER
W. BRANCH PENOBSCOT R.
IN THE TOWN OF
INDIAN PURCHASE ~ T3
IN
PENOBSCOT CO.
BONDED CONC. W.S., SEALS, DRAINING
SHEET 2 OF 2 AUGUSTA, MAINE APRIL 28, 1985